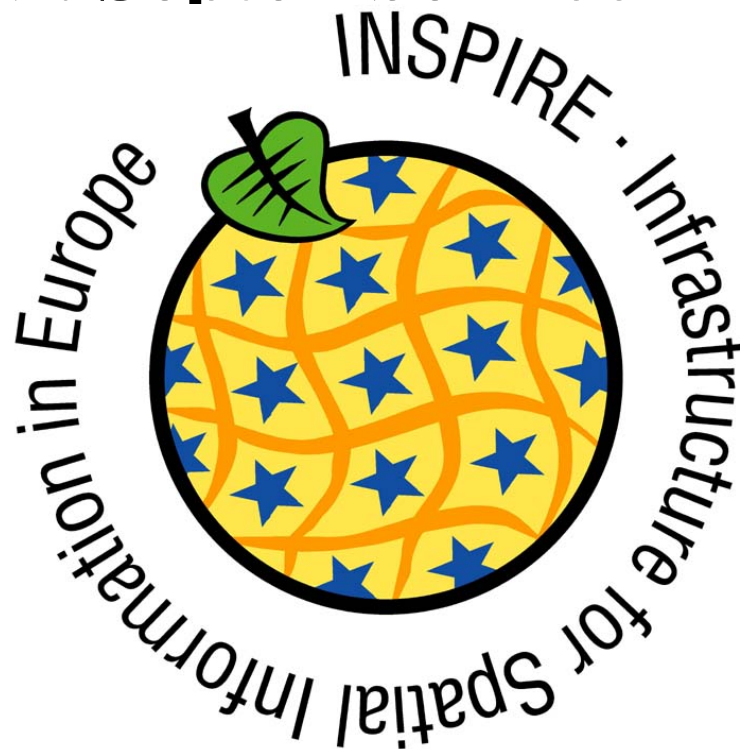


Møde i den danske INSPIRE-følgegruppe

19. September 2005



Infrastruktur for Stedbestemt Information i Europa

DK-Følgegruppe

Formålet bl.a.:

at afklare, hvilke krav fra det kommende INSPIRE-direktiv der vil få indflydelse på anvendelsen og udbredelsen af geografiske data på de 3 administrative niveauer, herunder de økonomiske konsekvenser.



Dagsorden

- 1. Velkomst og godkendelse af dagsorden**
- 2. Status for arbejdet med INSPIRE-direktivforslaget**
 - Ministerrådets vedtagelse
 - EU-Parlamentets betænkning
- 3. Skrivegrupperne for implementeringsregler**
 - Skrive- og supportgruppernes bemanding
 - Planlagt fremdrift (oversigt)
 - Commotology
- 4. Danske infrastrukturaktiviteter**
 - Præsentation
 - Diskussion
- 5. Forberedelse af implementering**
 - herunder etablering af teknisk netværk i Danmark
- 6. Gensidig orientering**
- 7. Eventuelt**

INSPIRE



INFRASTRUCTURE FOR SPATIAL INFORMATION IN EUROPE

INSPIRE



THE INSPIRE PRINCIPLES

DATA

should be **collected** once and **maintained** at the level where this can be done **most effectively**

INOPERABILITY

It should be possible to **combine** seamless spatial information from different sources across Europe and **share** it between many users and application

It should be possible for information collected at one level to be shared between all the different levels, detailed for detailed investigations, general for strategic purposes

NETWORKSERVICES

It should be **easy to discover** which geographic information is available, fits the needs for a particular use and under which conditions it can be acquired and used

CONDITIONS

Geographic information needed for good governance at all levels should be abundant **under conditions that do not refrain its extensive use**

Geographic data should become easy to understand and interpret because it can be visualised within the appropriate context selected in a user-friendly way.

Den tekniske proces

Kommissionen:

udarbejder forslag til direktiv
(ekspertgruppe)

udarbejder forslag til
implementeringsplaner (komite)

Etablerer portal

Overvåger

Den politiske proces

Parallel behandling i
Ministerrådet og Parlamentet

Beslutning i parlamentet

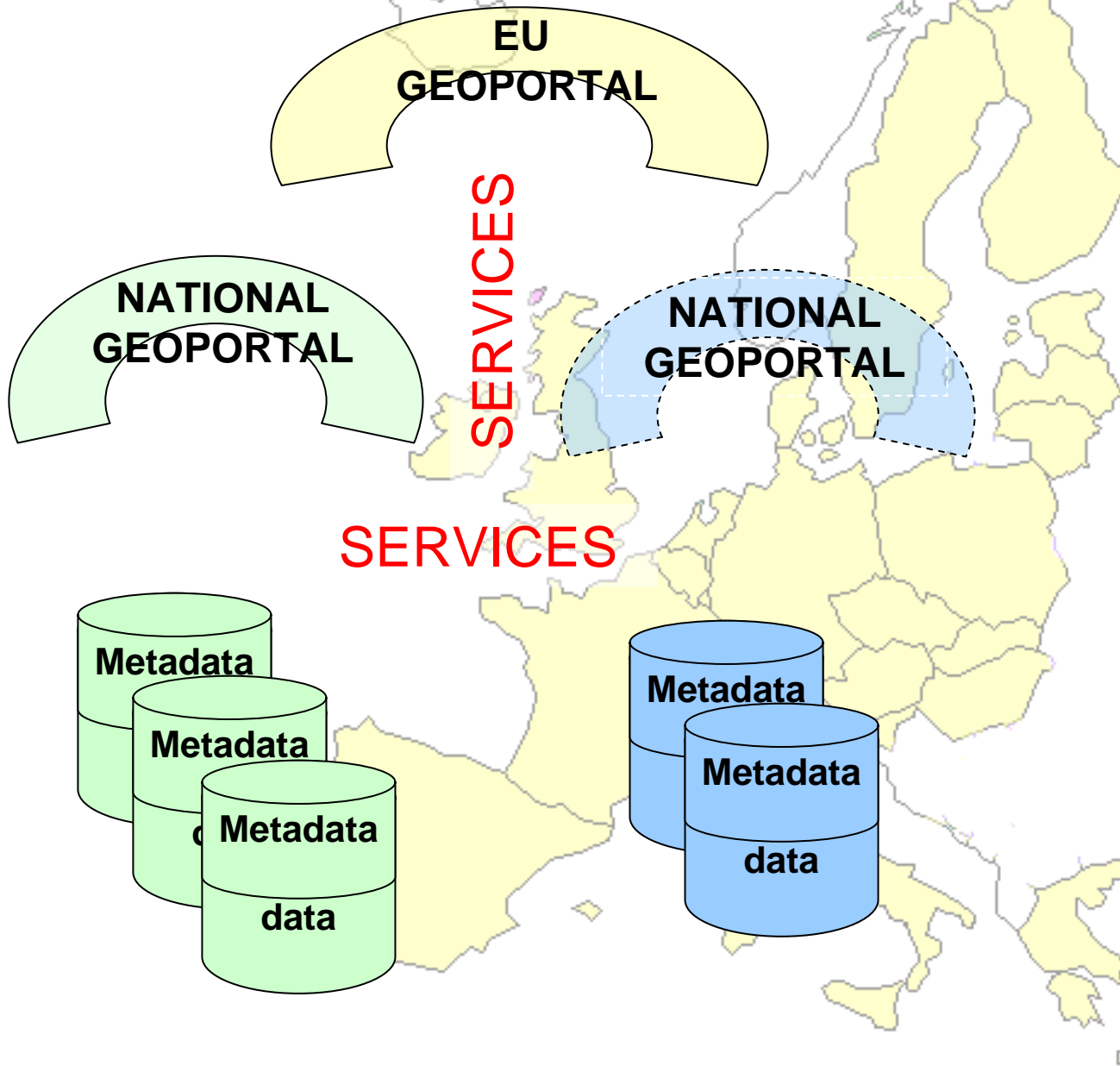
Behandling på ministerrådsmøde

Endelig vedtagelse

Implementering i national
lovgivning

INSPIRE

EUROPE 2014?



2006: EU directive

**2009: National
legislation in
place**

**2010: Services (a)
2011: Services (b)**

**2010: Metadata (I-
II)**

2013: Metadata (III)

2011: Data (I)

2019: Data (II-III)?

EUROPE 2014

INSPIRE

OVERALL PROVISION

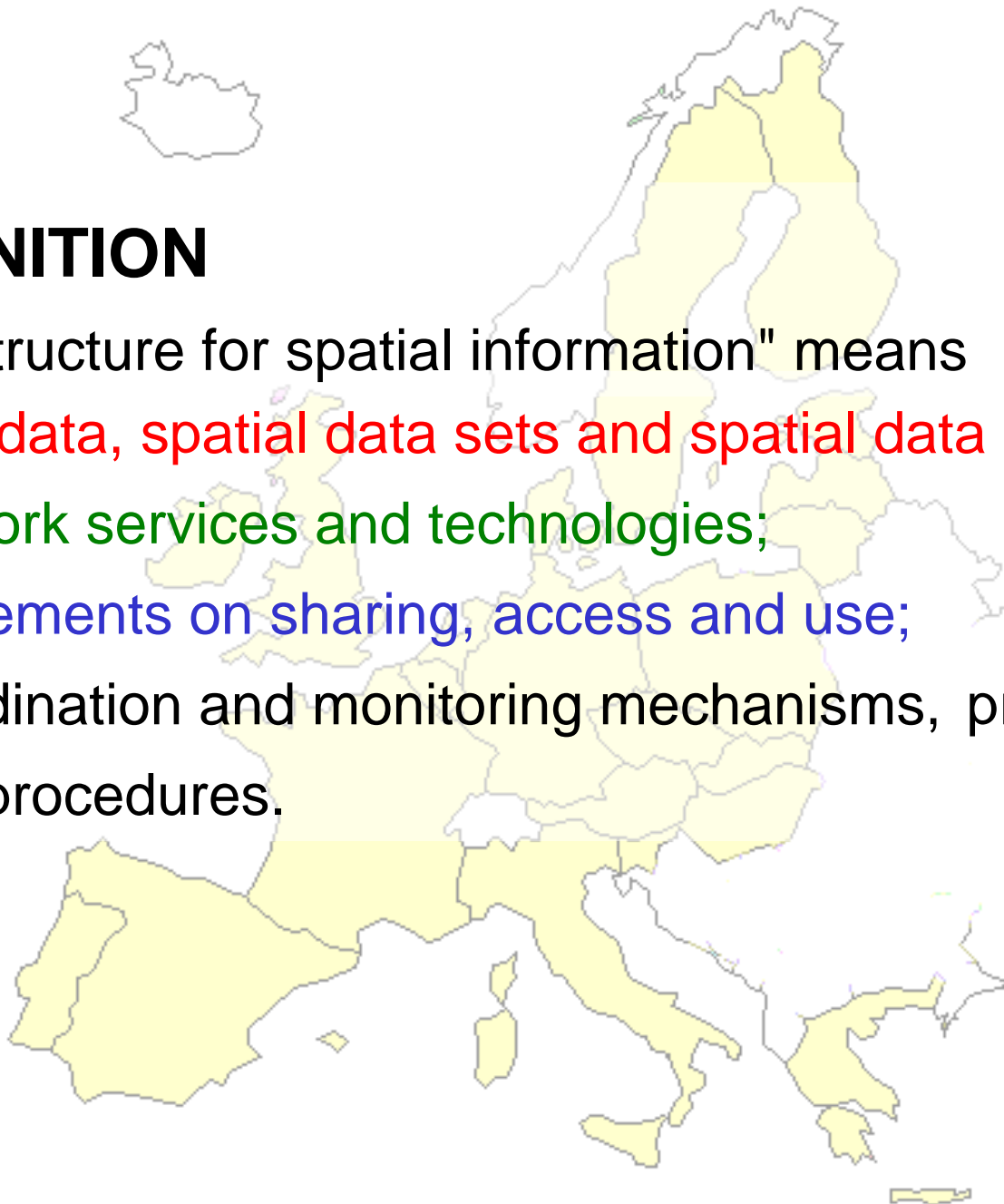
The infrastructure for spatial information in the Community shall build upon infrastructures for spatial information established and operated by the Member States



DEFINITION

"infrastructure for spatial information" means

- metadata, spatial data sets and spatial data services;
- network services and technologies;
- agreements on sharing, access and use;
- coordination and monitoring mechanisms, processes and procedures.



INSPIRE DATASETS

- are in electronic format
- are held by a public authority or
- represent the reference version of the spatial data sets.
- relate to the themes listed in the Annexes I, II or III.

INSPIRE does not request collection of new spatial data

TWO CATEGORIES OF DATA

The first category (annex I and II data):
data for geo-referencing data in the second category.

They have the status of "multi-purpose" spatial or basic data.

High demands on harmonisation

The second category (annex III data): the environmental data

They are needed in order to monitor and improve the state of the environment, including air, water, soil and

Limited demands on harmonisation

INSPIRE



Annex I - (2011)

Coordinate reference systems
Geographical grid systems
Geographical names
Administrative units
Transport networks
Hydrography
Protected sites

Annex II - (2014 ?)

Elevation
Addresses
Cadastral parcels
Land cover
Orthoimagery
Geology

Annex III - (2014 ?)

Statistical units census
Buildings
Soil
Landuse
Human health and safety
Governmental services and
environmental monitoring facilities
Classified sites (industry and agricultur)
Population distribution – demography
Area management and zones
Natural risk zones
Atmospheric conditions
Meteorological geographical features
Oceanographic geographical features
Sea regions
Bio-geographical regions
Energy

INTEROPERABILITY OF DATASETS AND

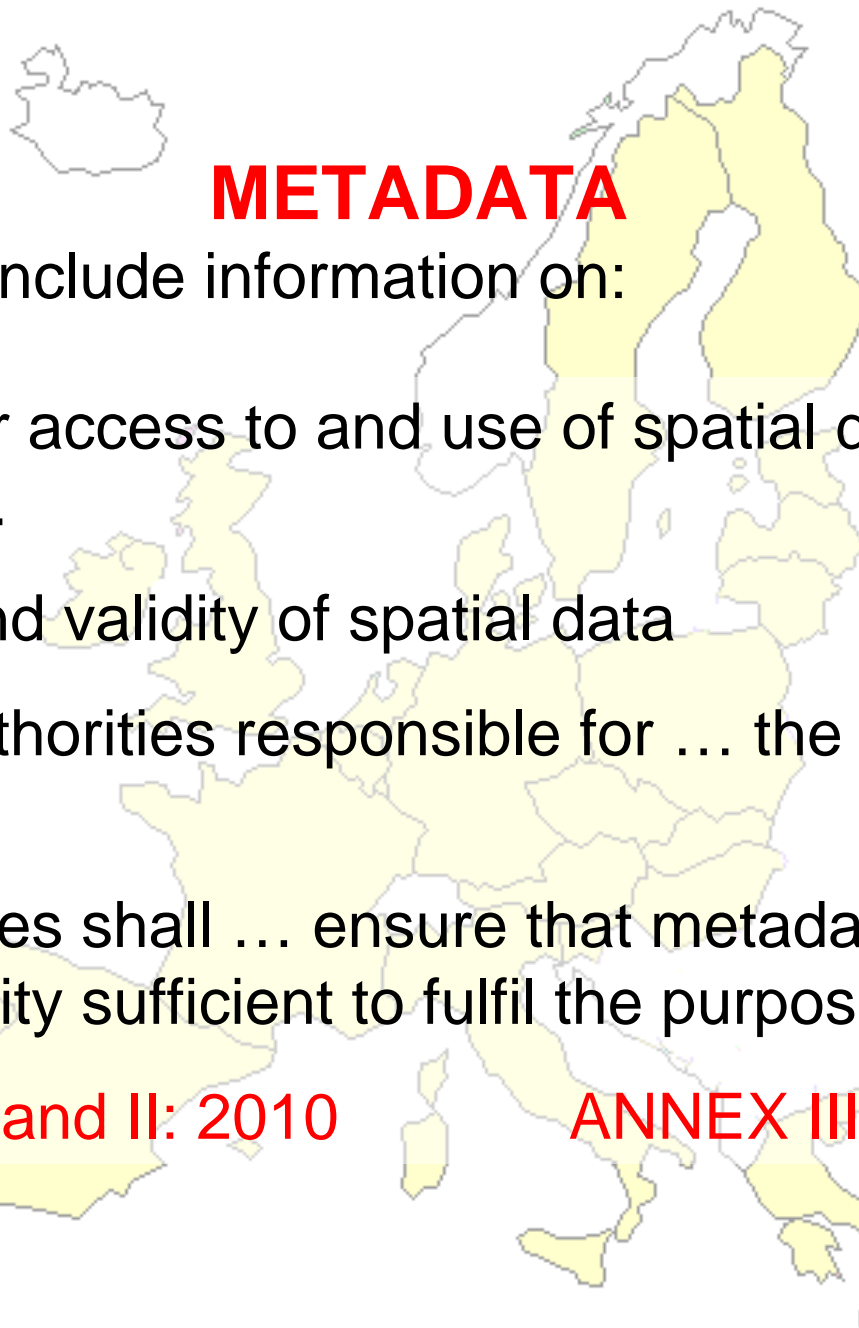
SERVICES

General demands to all INSPIRE datasets

Definition and classification of spatial objects relevant to the spatial data and the way in which those spatial data are geo-referenced.

Specific demands to Annex I and II data

- unambiguous identification of spatial objects, to which identifiers under existing national systems can be mapped
- the relationship between spatial objects
- the key attributes
- information on the temporal dimension of the data
- updates of the data



METADATA

Metadata shall include information on:

1. conditions for access to and use of spatial data sets and services
2. the quality and validity of spatial data
3. the public authorities responsible for ... the spatial data sets and services
4. Member States shall ... ensure that metadata are complete and of a quality sufficient to fulfil the purpose.

ANNEX I and II: 2010

ANNEX III: 2013

NETWORK SERVICES

Discovery services

View services

Download services

Transformation services

incl. semantic data transformation

Additional services

(E-commerce service)

Community portal

National portals (not mandatory)

based on a service oriented architecture

DATA-SHARING AND RE-USE

Discovery services

free of charge

View services

free of charge/charging

Download services

charging is possible

Transformation services

free of charge

E-commerce services

to be available

Additional services

charging is possible

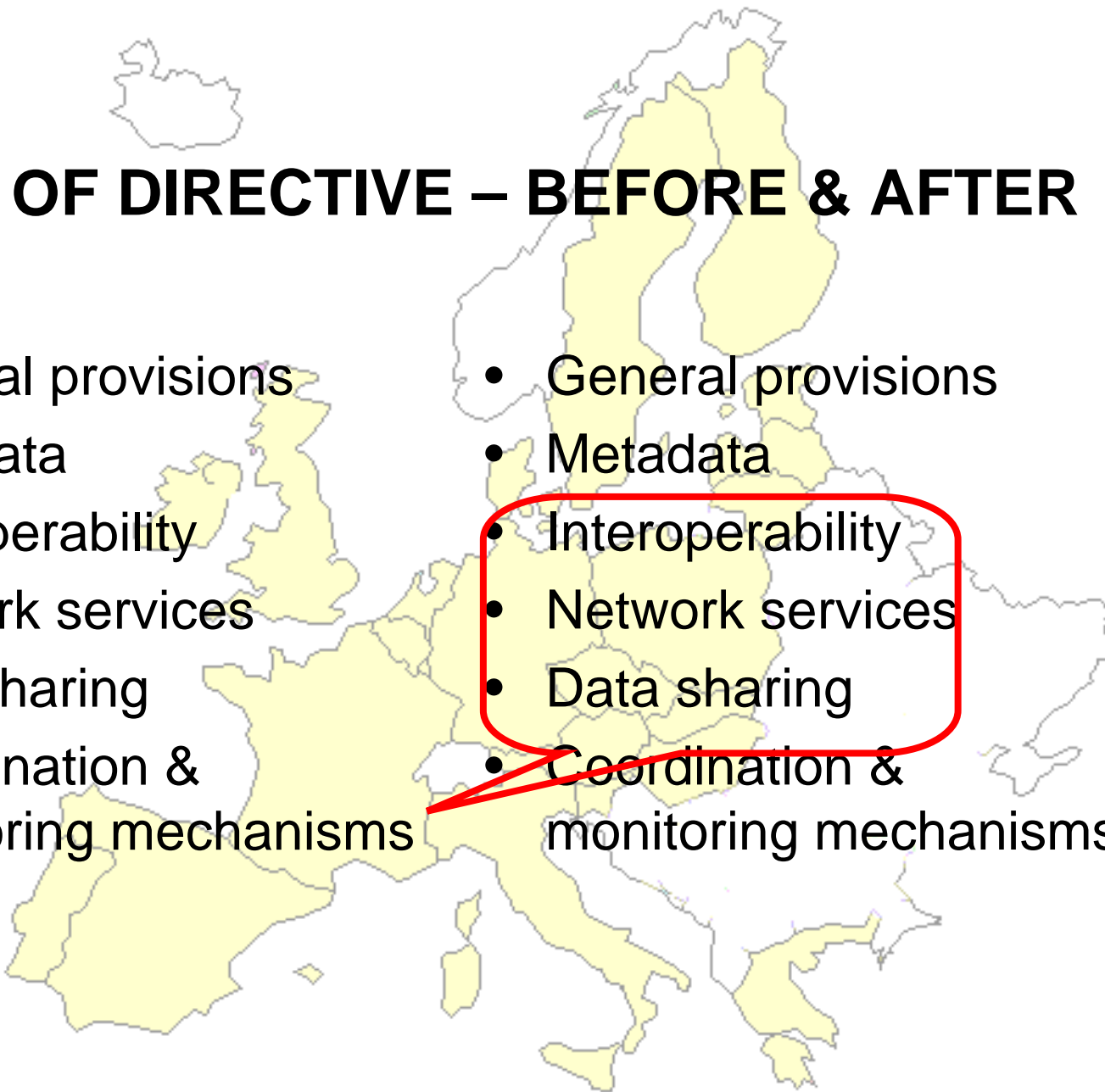
Community portal

The Commission

National portals

The countries

TEXT OF DIRECTIVE – BEFORE & AFTER

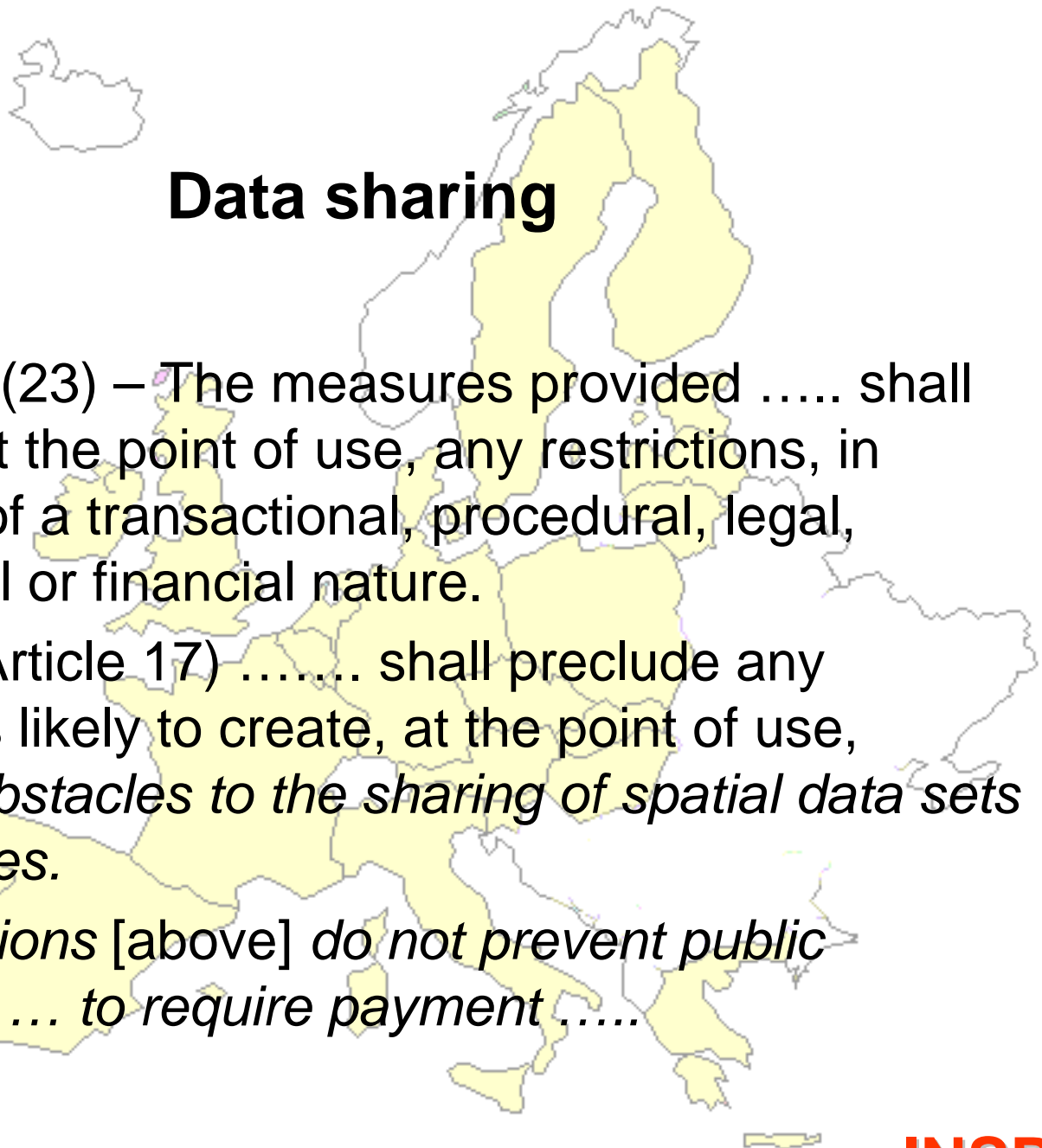
- 
- General provisions
 - Metadata
 - Interoperability
 - Network services
 - Data sharing
 - Coordination & monitoring mechanisms
- General provisions
 - Metadata
 - Interoperability
 - Network services
 - Data sharing
 - Coordination & monitoring mechanisms

Interoperability

- Article 7 – “*As a basis for developing the proposals for such implementing rules, the Commission shall undertake an analysis of the feasibility and expected costs and benefits*”
- “To the extent feasible, MS shall ensure all newly collected or updated spatial data sets ... are brought into conformity with the implementing rules

Network Services

- Article 13 – MS may limit public access where such access would adversely affect any of the following:
 -
 - Intellectual property rights
 -
- Article 14 – MS shall ensure that:
 - ‘discovery services’ are available to the public free of charge
 - ‘view services’ are, as a rule, available to the public free of charge. However,



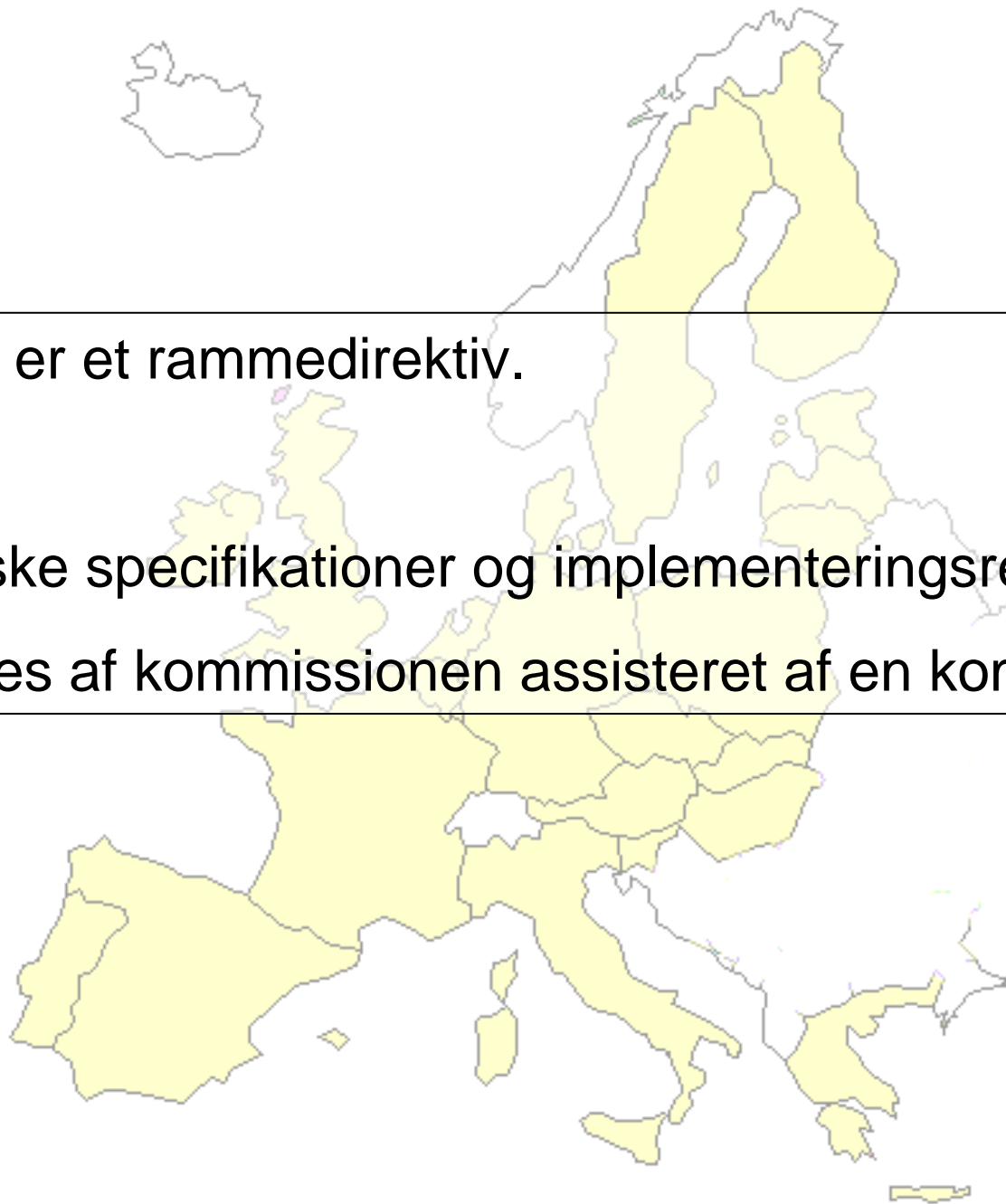
Data sharing

- Old article (23) – The measures provided shall preclude at the point of use, any restrictions, in particular of a transactional, procedural, legal, institutional or financial nature.
- Became (Article 17) shall preclude any restrictions likely to create, at the point of use, *practical obstacles to the sharing of spatial data sets and services.*
- *The provisions [above] do not prevent public authorities ... to require payment*



INSPIRE er et rammedirektiv.

De tekniske specifikationer og implementeringsreglerne udarbejdes af kommissionen assisteret af en komite.



VEJEN FREM TIL ET DIREKTIV

1. Politisk enighed på rådsmødet den 24. Juni (Komm. uenig)
2. Juridisk og sproglig finpudsning, samt oversættelse.
3. Ministerrådet giver "håndslag" på forslaget.
4. Rådets forslag sendes til parlamentet.
5. Anden læsning starter i formentlig omkring 1. december 2005.
6. Har parlamentet ændringsforlag starter en proces, hvor landene i miljøudvalget fastlægger forhandlings-mandatet. "Parlament" og formandsskab etablerer et fælles grundlag.
7. Når det foreligger sender formanden for ministerrådet den nye tekst til parlamentets formand, der herefter meddeler at de er enige.
8. Miljøministrene kan så forhåbentlig tiltræde teksten.
9. Hvis råd og parlament ikke kan enes skal forligsudvalget på arbejde.